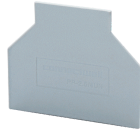


PP2. 5/4UN



Partition Plate

Partition Plate are used to segregate different groups of Terminal Blocks and provide the required creepage and clearance values in an assembly. Partition Plates electrically isolate adjacent shorting links. They also provide a separation between Terminal Blocks of different potentials.

PRODUCT SPECIFICATION

Height	37 mm
Width (Thickness)	1.6 mm

ORDERING INFORMATION

CAT. NO.	DESCRIPTION	STD. PACK
PP2.5/4UN	Partition Plate in Grey colour	50

SUITABLE FOR

CTS2.5UN	2.5 sq.mm, 5 mm thick Feed Through Terminal Block
CTS4UN	4 sq.mm Standard Feed Through Terminal Blocks
CTS4UNP	4 sq.mm Feed Through Philips Head screw Terminal Blocks
CTT2.5U	2.5 sq.mm Thermocouple Terminal Blocks.
CM4USC	4 sq.mm Spring Loaded Feed Through Terminal Blocks
CTS2.5UE	2.5 sq.mm, 6 mm thick Feed Through Terminal Block