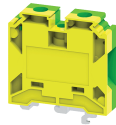


# CGT35U



**connectwell**  
THE RIGHT CONNECTION

## 35 sq.mm Ground / Earth Terminal Blocks for multi-rail mounting

These Terminal Blocks are used for Grounding / Earthing Wires. They are Green-Yellow colour coded as per industries standard. They have the same top profile as their respective feed through Terminal Blocks.

### TECHNICAL DATA

Tightening Torque	2.5 Nm
Housing Material	Polymide
Product Function	Earthing/Grounding
Wire Entry Orientation	Side Entry
Mounting Possibility	DIN 32/DIN 35/DIN 35-15 Rail
Screw Size	M6
Operated by	Screwdriver
Rated Surge Voltage	8 KV
Pollution Degree	3

### CONNECTION DATA

Conductor Cross Section Stranded min.	2.5 mm <sup>2</sup>
Conductor Cross Section Stranded max.	35 mm <sup>2</sup>
Conductor Cross Section AWG/Kcmil min	8 AWG
Conductor Cross Section AWG/Kcmil max	2 AWG
Conductor Cross Section Stranded with Ferrule/Lug min	2.5 mm <sup>2</sup>
Conductor Cross Section Stranded with Ferrule/Lug max	35 mm <sup>2</sup>
2 Conductors with same Cross Section Stranded min	2.5 mm <sup>2</sup>
2 Conductor with same Cross Section Stranded max	25 mm <sup>2</sup>
Stripping Length	15 mm
Internal Cylindrical Guage	A9

### DIMENSIONS

Height with DIN 32 rail	68 mm
Height with DIN 35 x 15 mm rail	70.5 mm
Height with DIN 35 x 7.5 mm rail	63.2 mm
Length	58 mm
Width (Thickness)	16 mm

### ORDERING INFORMATION

CAT. NO.	DESCRIPTION	STD. PACK
CGT35U	35 sq.mm Grounding / Earthing Terminal Block.	20

### ACCESSORIES

IMAGES	CAT. NO.	DESCRIPTION	STD. PACK
	CA501-1M	Din 32 Rail unslotted 1 meter	50
	CA501-1M-S	Din 32 Rail slotted 1 meter	50
	CA501-2M	Din 32 Rail unslotted 2 meter	50

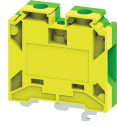
### ACCESSORIES

IMAGES	CAT. NO.	DESCRIPTION	STD. PACK
	CA501-2M-S	Din 32 Rail slotted 2 meter	50
	CA701-1M	Din 35 Rail unslotted 1 meter	50
	CA701-2M	Din 35 Rail unslotted 2 meter	50
	CA701-2M-S	Din 35 Rail slotted 2 meter	50
	CA701-1M-S	Din 35 Rail slotted 1 meter	50
	CA701-15-1M	Din 35 Rail 15 deep unslotted 1 meter	50
	CA701-15-1M-S	Din 35 Rail 15 deep slotted 1 meter	50
	CA701-15-2M	Din 35 Rail 15 deep unslotted 2 meter	50
	CA701-15-2M-S	Din 35 Rail 15 deep slotted 2 meter	50
	CA509/K16	Marking Tag Blank suitable for CTS35UNA / CGT35U Terminal Blocks	100
	SCS1/5.5	Electricians Screwdriver for slotted screws	10

### APPROVALS



CGT35U



**connectwell**  
THE RIGHT CONNECTION

**RATINGS AS PER STANDARDS**

<b>STANDARDS</b>	<b>UL 1059</b>	<b>CSA C.22.2 No:158</b>	<b>DIN EN60947-7-2</b>
Approvals	UL	CSA	VDE
Conductor Cross Section Stranded min.	8 AWG	8 AWG	10 mm <sup>2</sup>
Conductor Cross Section Stranded max.	2 AWG	2 AWG	35 mm <sup>2</sup>
Tightening Torque	25 lb-in	25 lb-in	2.5 Nm
<b>STANDARDS</b>	<b>IEC/EN60947-7-2</b>	<b>EN60079-7</b>	<b>EN60079-7</b>
Approvals	CE	ATEX	ATEX-IECex
Conductor Cross Section Stranded min.	2.5 mm <sup>2</sup>	10 mm <sup>2</sup>	10 mm <sup>2</sup>
Conductor Cross Section Stranded max.	35 mm <sup>2</sup>	35 mm <sup>2</sup>	35 mm <sup>2</sup>
Tightening Torque	2.5 Nm	2.5 Nm	2.5 Nm
Operating Temperature Range		-40 to +85 °C	
<b>STANDARDS</b>	<b>IEC 60079-0 &amp; IEC 60079-7</b>		
Approvals	AEx		
Conductor Cross Section Stranded min.	8 AWG		
Conductor Cross Section Stranded max.	2 AWG		
Tightening Torque	25 lb-in		